

S A B B I A

puk

S A B B I A

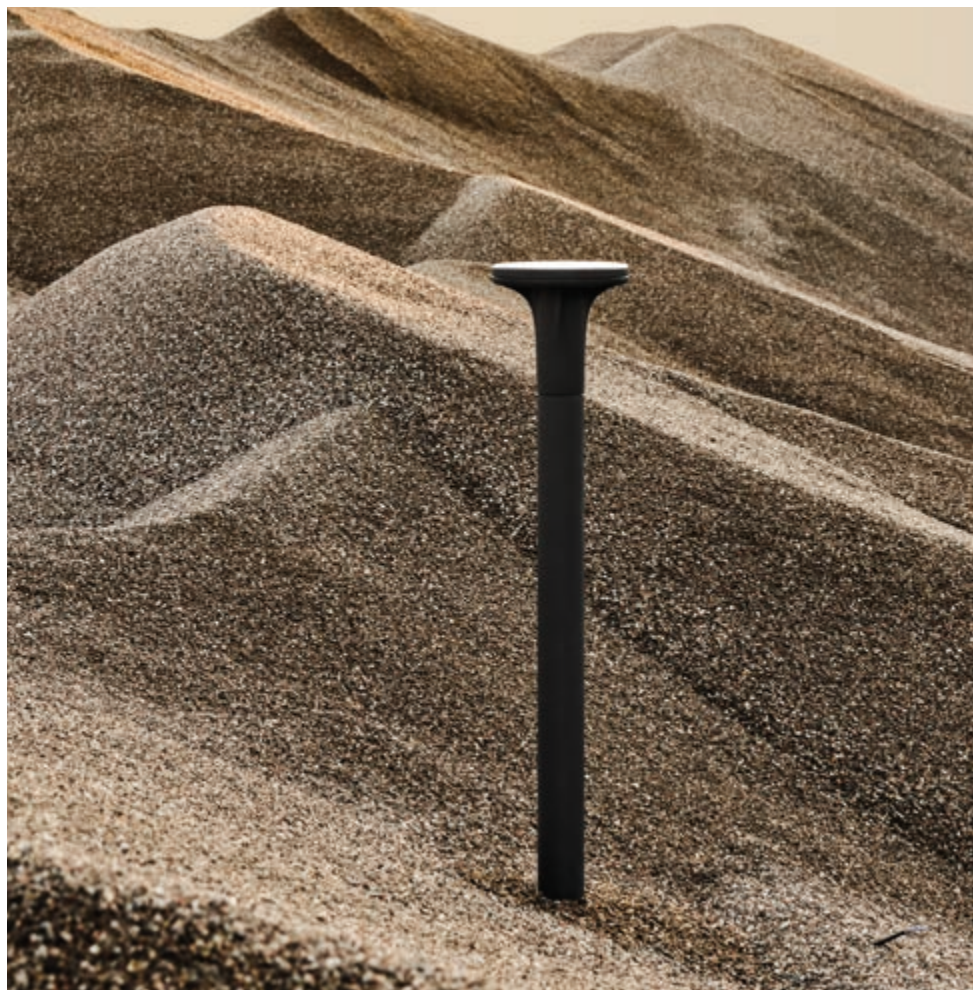
S A B B I A

MEET  
THE ENDLESS  
EMBRACE  
OF SAND.

An endless expanse  
of particles shaped  
by time, caressed  
by the wind, and  
sculpted by nature.



ALDER









FLAMINGO

A motionless sea that ripples under the sun, reflects its light, and whispers ancient tales of wild, untamed landscapes. In this desert scenery, primordial, where sand reigns supreme, the sleek, minimal design of Puk's lighting solutions emerges like a gentle breath of modernity in a world defined by simplicity.

RING



Warm and shifting hues, a grainy texture that seems to escape through your fingers, and a soft, almost silent crunch accompanying every step.







RING



RING POLE







RING POLE





NANOSTEP ROUND XXS

The sand's  
embracing  
touch gently  
weaves around  
the bases of  
the luminaires,  
catching and  
amplifying the  
glow, emphasizing  
the silhouettes  
as if to highlight  
the harmony  
between nature  
and innovation.

With iconic  
designs and  
cutting-edge  
technology,  
Puk's outdoor  
lighting fixtures  
become genuine  
works of art,  
crafted to engage  
in dialogue  
with their  
surroundings  
- enhancing  
them, never  
overpowering  
them.



NANOSTEP ROUND



NANOSTEP ROUND XS









FACE UP

Beams of light  
slice through the  
desert darkness,  
unveiling every  
detail: grains of  
sand sparkling  
like diamonds,  
soft shadows  
that waltz across  
the gravel,  
and contrasts  
that create  
unexpected  
harmony.





FACE UP

TERRA

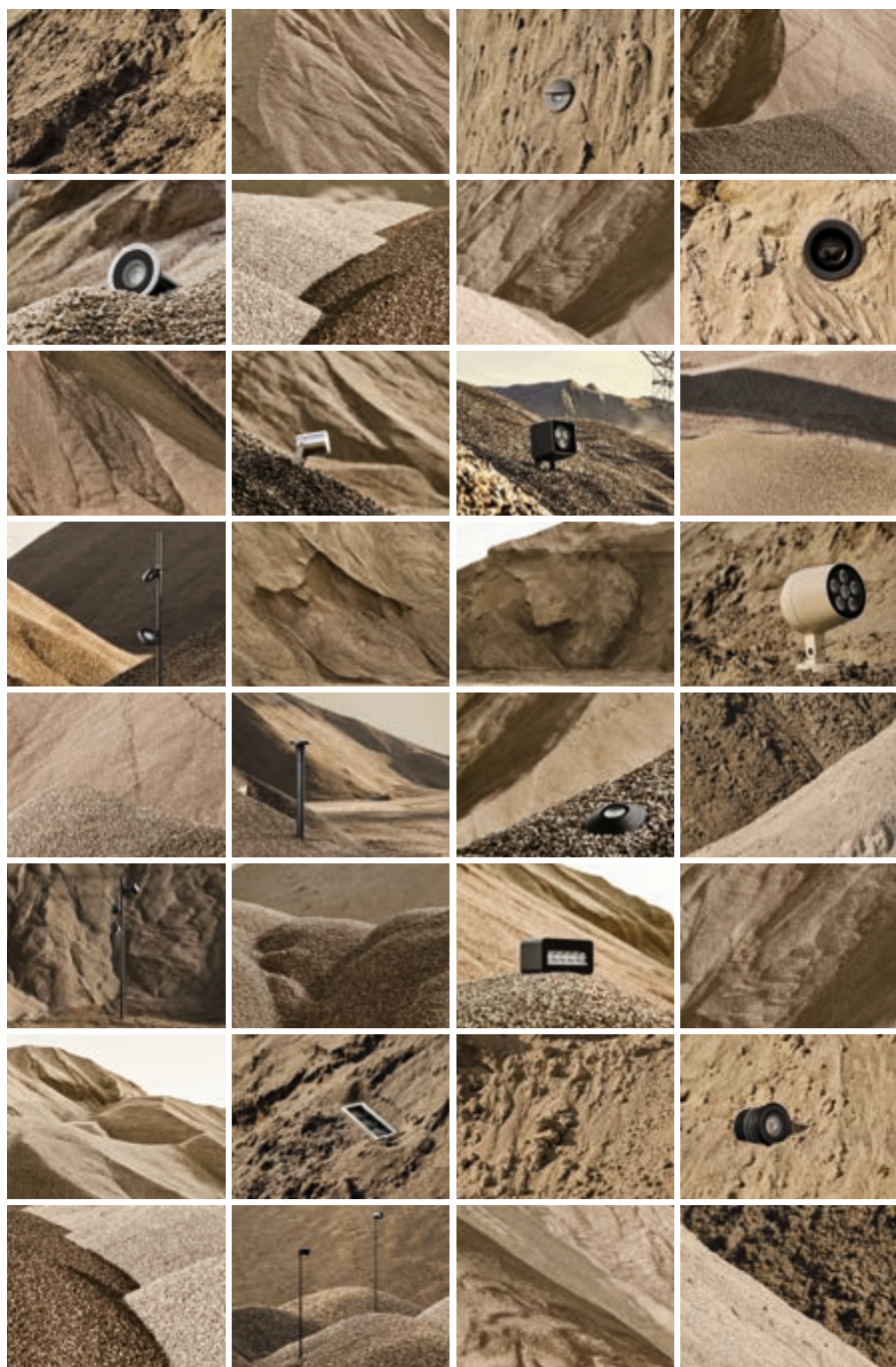


Designed to conquer even the harder conditions - resisting dust, wind, and extreme temperatures - Puk's lighting delivers top-tier performance while celebrating a balance of design, and nature.



TERRA











WALL BOX





NANOWALL

NANOWALL







NANOWALL

But it's not  
just about  
resilience or  
aesthetics.

It's about  
the story of  
light merging  
with the very  
soul of its  
surroundings,  
becoming  
part of the  
landscape  
itself.

This is our  
vision: to  
illuminate the  
world with  
solutions that  
transcend  
functionality,  
turning every  
space into an  
unforgettable  
experience.





The sand welcomes, envelops, transforms. Puk's luminaires trace paths of light that seamlessly blend with the dry, sun-kissed wilderness, amplifying its spirit while showcasing the full potential of human design. In this narrative, the environment becomes a story, and light writes its most captivating chapters.





COINY







FRAME







SABBIA


Art director  
**Nava + Arosio**

Photo  
**Paolo Volontè**

Communication  
**Red Apple International**

**PUK ITALIA GROUP**

Via San Giorgio, 16 | 20851 Lissone (MB) Italy  
T. +39 039 2457920 | F. + 39 039 2457924  
[puk@puk.it](mailto:puk@puk.it)

A close-up photograph of a layered rock face, possibly a cliff or cave wall. The rock is light brown and shows distinct horizontal sedimentary layers. A large, dark, shadowed cavity is visible in the center, with a smaller, similar cavity to its left. The texture of the rock is rough and uneven. The text 'puk.it' is overlaid in the center of the image.

puk.it