

Nanostep

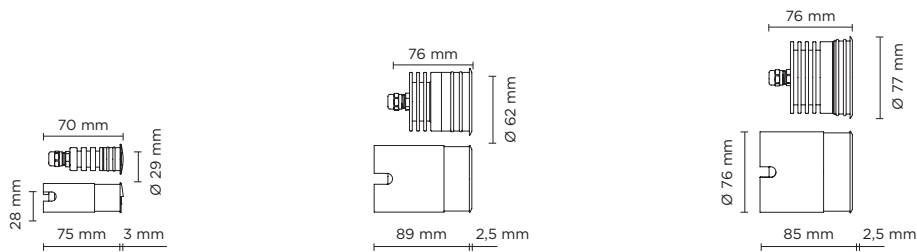
WALL RECESSED

Creating stages, one shape at once. Proposed in circular version for accent lighting and linear for expanding the light beam, NANOSTEP accompanies every movement. The various sizes make it easy to fit in multiple contexts while the trimless version ensures perfect continuity between wall and lighting. All, step by step.





NANOSTEP ROUND

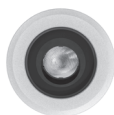


XXS

XS



505001
ROUND XXS



505002
ROUND XS



505003
ROUND

Material

Hard anodized aluminum body and trim

Coating

Polyester powder coating with phosphocromating pre-finish

Gasket

Silicone rubber

Screws

Stainless steel

Glass

Tempered

Led colour temperature

2700°K
3000°K
4000°K

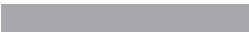
Wattage

MAX 10 WATT

Rating

IP68 | IK08

Available finishes


RAL 9006 Textured Grey

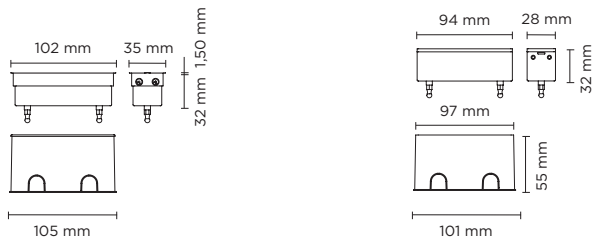

RAL 7016 Anthracite Grey


Matt Black

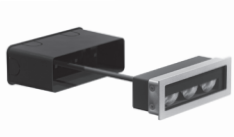




NANOSTEP LINEAR



TRIMLESS



505004
LINEAR



505005
LINEAR
TRIMLESS

Material

Hard anodized aluminum

Coating

Polyester powder coating with phosphochromating pre-finish

Screws

Stainless steel

Glass

Tempered

Led colour temperature

2700°K
3000°K
4000°K

Wattage

MAX 6 WATT

Rating

IP68 | IK08

Available finishes

RAL 9006 Textured Grey

RAL 7016 Anthracite Grey

Matt Black

Glass





