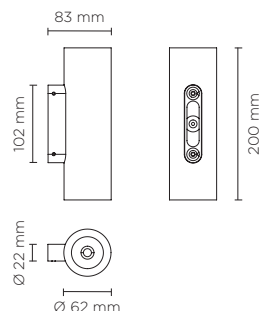




403104

NANOWALL ROUND HP 02

Wall applique for outdoor installation on a façade/wall, with up&down light. Body in anodized aluminum with phosphochromatised and polyester powder coating, tempered safety glass, moulded silicone gasket and stainless steel screws. Constant current max 700mA remote driver needed. With 2 x CREE "XHP35" LED. IP66 rating.



350 mA - LED POWER 2x5W

light source	light beam options	lumen output (lm)	lumin. efficacy (lm/w)
2700°K warm-white			
high-power led	4°	2x 500	100.00
high-power led	10°	2x 479	95.80
high-power led	28°	2x 464	92.80
3000°K warm-white			
high-power led	4°	2x 510	102.00
high-power led	10°	2x 489	97.80
high-power led	28°	2x 474	94.80
4000°K neutral-white			
high-power led	4°	2x 520	104.00
high-power led	10°	2x 499	99.80
high-power led	28°	2x 484	96.80

Finish color options:

Textured Grey
RAL 9006

Anthracite Grey
RAL 7016

Matt Black
(on request)

Technical features

IP66

IK09

CE

5
YEARS



Technical data

Wattage	Max 2x10 WATT
IP Rating	IP66
IK Rating	IK09
Material	Hard anodized aluminum
Coating	Polyester powder coating with phosphochromating pre-finish
Light Source	2 x CREE XHP35 LED
Screws	Stainless steel
Remote driver	Constant current max 700mA
Gasket	Silicone rubber
Glass	Tempered
Power cable	1 mt. power cable included
Gross weight	1,30 Kg

500 mA - LED POWER 2x8W

light source	light beam options	lumen output (lm)	lumin. efficacy (lm/w)
2700°K warm-white			
high-power led	4°	2x 670	83.75
high-power led	10°	2x 642	80.25
high-power led	28°	2x 622	77.75
3000°K warm-white			
high-power led	4°	2x 690	86.25
high-power led	10°	2x 662	82.75
high-power led	28°	2x 642	80.25
4000°K neutral-white			
high-power led	4°	2x 703	87.88
high-power led	10°	2x 676	84.50
high-power led	28°	2x 656	82.00

700 mA - LED POWER 2x10W

light source	light beam options	lumen output (lm)	lumin. efficacy (lm/w)
2700°K warm-white			
high-power led	4°	2x 897	89.70
high-power led	10°	2x 762	76.20
high-power led	28°	2x 836	83.60
3000°K warm-white			
high-power led	4°	2x 907	90.69
high-power led	10°	2x 872	87.20
high-power led	28°	2x 846	84.60
4000°K neutral-white			
high-power led	4°	2x 930	93.00
high-power led	10°	2x 890	89.00
high-power led	28°	2x 863	86.30

AC114

STANDARD GLARE SHIELD

Glare shield accessory made in hard anodized black aluminum, providing good balance in between glare control and light output.

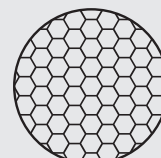
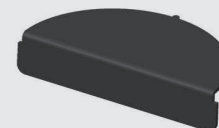
AC115

SUPER COMFORT GLARE SHIELD

Glare shield accessory made in hard anodized black aluminum, for applications requiring very reduced glaring; minimal light loss on the light surface but overall lumen output typically reduced by 50%.

AC064

HYONECOMB LOUVER



AC064
HONEYCOMB
LOUVER