

DOUBLE HYDROBOOK POLE-TOP MAXI LED

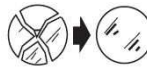
COD. 803003

COD. 803004

ASSEMBLY AND OPERATING INSTRUCTIONS:



-class I luminaire with built-in transformer 220-240V 50-60Hz
-apparecchio in classe 1 con trasformatore incorporato a 220-240V 50-60Hz



-replace the damaged protective glass
-sostituire i vetri di protezione se danneggiati
-glass features: plane float glass - safety tempered
-caratteristiche vetro: vetro piano float di sicurezza temperato



-getting rid of as urban waste forbidden
-separate collection is mandatory when the product is at the end of its life
-è vietato lo smaltimento come rifiuto urbano
-è obbligatoria la raccolta separata a fine vita del prodotto

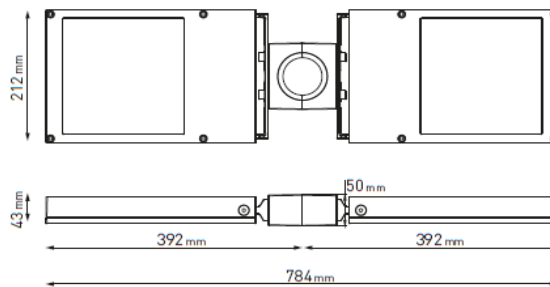
IP65

-totally dust-proof, protected against the water
-totalmente protetto contro la polvere, e all'acqua

CE Made in Italy

NB: These assembly instructions must be given to end users for correct maintenance and so that they know how to change the bulb. The appliance must not be tampered with or transformed and it must be installed and used as supplied and in compliance with the National Rules on Installations. Any non-compliant installations will invalidate all forms of guarantee. The company cannot be held responsible for damage caused by incorrect assembly.

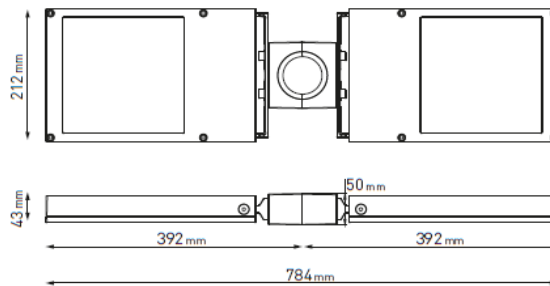
COD. 803003



HYDROBOOK POLE-TOP MAXI 12LED

-Power consumption : 2X18W
-Voltage :220-240V 50-60Hz
-Color Temperature : 3000K WARM WHITE or other available 4000K or Blue
-Beam angle : cycle route pedestrian (narrow) or street (medium wide)
-Lumen output : 2X1728
-Insulation class: I
-IP protection: IP65
-Gross weight: 5.8kg

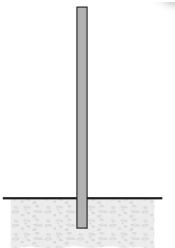
COD. 803004



HYDROBOOK POLE-TOP MAXI 24 LED

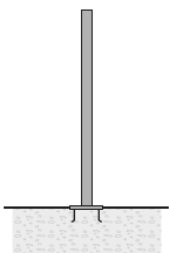
-Power consumption : 2X36W
-Voltage :220-240V 50-60Hz
-Color Temperature : 3000K WARM WHITE or other available 4000K or Blue
-Beam angle : cycle route pedestrian (narrow) or street (medium wide)
-Lumen output : 2X3456
-Insulation class: I
-IP protection: IP65
-Gross weight: 5.8kg

BURIED POLES



CODE	ARTICLE	HEIGHT MM.	DESCRIPTION
809901	CYLINDRICAL POLE 3,5 METERS TO BE BURIED	3.500	Cylindrical pole made in steel S235JR (UNI EN 10219) hot galvanized (UNI EN 1461), diameter 76 mm, thickness 4 mm. Phospho-chromatised and polyester powder coated. Total height including 500 mm to be buried into the ground. Includes IP54 cover plate 132x38 mm and terminal block in double insulation.
809902	CYLINDRICAL POLE 4,5 METERS TO BE BURIED	4.500	
809903	CYLINDRICAL POLE 5,5 METERS TO BE BURIED	5.500	
809908	ADAPTER DIAM. 76MM → 60MM		Adapter for pole diam. 76 mm, allow the diameter reduction to 60 mm

POLES WITH BASE-PLATE



CODE	ARTICLE	HEIGHT MM.	DESCRIPTION
809904	CYLINDRICAL POLE 3 METERS WITH BASE-PLATE	3.000	Cylindrical pole made in steel S235JR (UNI EN 10219) hot galvanized (UNI EN 1461), diameter 76 mm, thickness 4 mm. Phospho-chromatised and polyester powder coated. With base plate dim. 250x250 mm, thickness 10 mm. Includes IP54 cover plate 132x38 mm and terminal block in double insulation.
809905	CYLINDRICAL POLE 4 METERS WITH BASE-PLATE	4.000	
809906	CYLINDRICAL POLE 5 METERS WITH BASE-PLATE	5.000	
809907	ANCHORAGE UNIT FOR BASE-PLATE		Base plate dim. 250x250 mm, thickness 3 mm, made in galvanized steel complete of nr. 4 anchorage threaded bolts
809908	ADAPTER DIAM. 76MM → 60MM		Adapter for pole diam. 76 mm, allow the diameter reduction to 60 mm

Installation:

CAUTION: Possibly hazardous optical radiation emitted from this product. Do not stare at operating lamp. May be harmful to the eye. The replacement must be done by a qualified electrician.

Recommendations

- 1) verify that the equipment used to connect our devices to enjoy all the guarantees required under European law
- 2) use the cables, connectors and quality materials for electrical wiring;
- 3) Products with IP65/68 degree make the wiring / connections with accessories provide the same degree IP of the selected product (available in the catalog);
- 4) Disconnect main voltage during installation and maintenance
- 5) It is essential to do a frequent cleaning of the glass and of the outer surface of the fixture to avoid build up of mud and dirtiness resulting in dangerous overheating due to uncorrect light and heat dissipation. Clean carefully the glass screen removing limestone deposits by means of a scraper.

Disconnect main voltage during installation and maintenance

- 1) Drill two holes on the edge of the pole suitable at the point of supply 25mm to the top (pic1)
- 2) Remove the bracket of the luminaire unscrewing the two lateral screw by using a hexagonal tool. Make the same operation with the second luminaire (pic 2)
- 3) Assembling the semicircular adapter to the two brackets of the luminaire as shown in figure (pic 3)
- 4) Plug the adapter with the two brackets to the pole (pic4)
- 5) Fix the adapter with the brackets to the pole in the hole previously drilled using the hex key (pic5)
- 6) Plug the two power cable through the holes of the bracket and the pole (pic6)
- 7) Fix the luminaire to the brackets
- 8) Adjust the vertical and horizontal inclination using the hexagonal screw drive by acting on the screws of the brackets (pic8)
- 9) For poles with 60 mm in diameter using the plastic adapter as in picture 9
- 10) For electrical connection of the pole connectors follow the general safety rules. Is a Class 1 should be connected to the grounding

